



User Guide to SpitfireExport™ 2.1

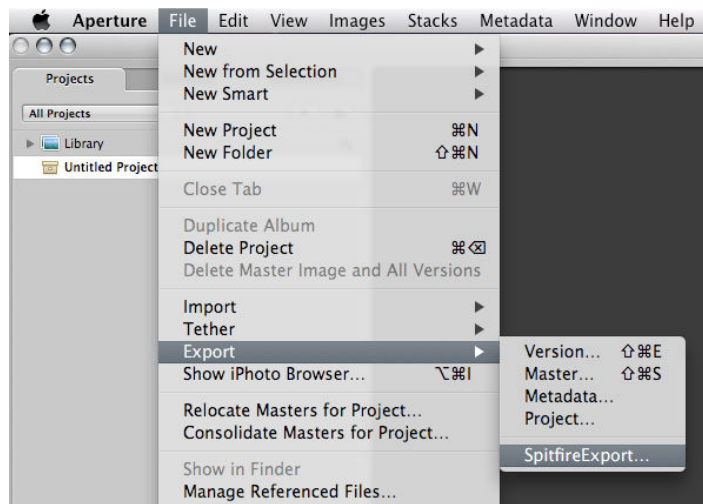
SpitfireExport™ is a plug-in for Apple Aperture that allows you to directly export images from Aperture to your Spitfire Photo account. All you need is Apple Aperture 1.5 or above, the SpitfireExport™ 2.1 download, and your username, password, and URL for your Spitfire Photo account.

I. Installation

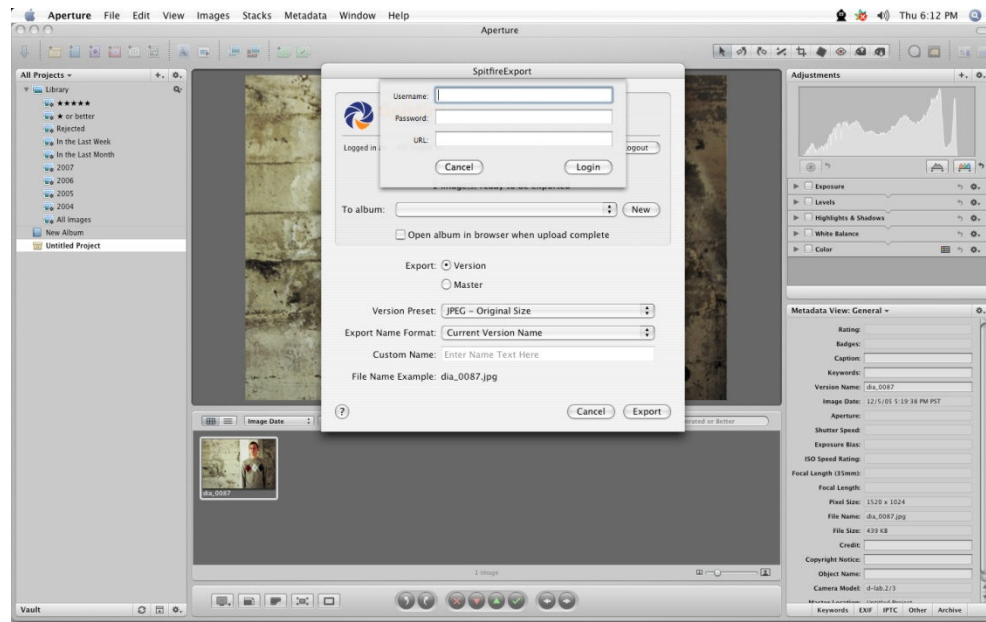
- a. Download SpitfireExport™ 2.1 from <http://www.spitfirephoto.com/aperture>.
- b. Double click the zip file to begin installation and follow the instructions in the installer. The plug-in will be installed in your home folder at `~Library/Application Support/Aperture/Plug-Ins/Export`.
- c. Restart Apple Aperture.

II. Using the Plug-In

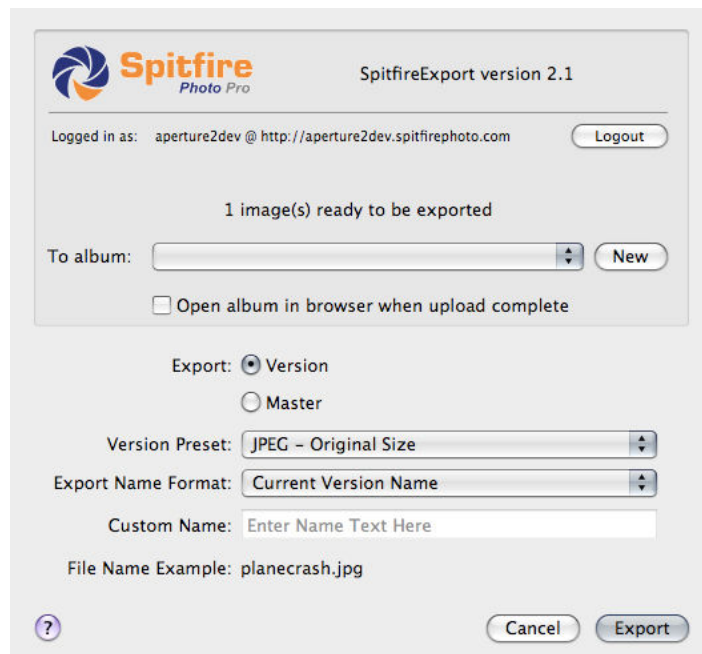
- a. Start Aperture and select the images that you'd like to export to your Spitfire Photo account.
- b. From the File menu, click Export -> SpitfireExport.



- c. Login to your Spitfire Photo account using your administrator username and password. Enter the full web address for your Spitfire Photo account in the URL field.



- d. Select an album to upload to from the drop down box or create a new one using the 'New' button.
- e. Specify your preferred format, version, and name options for your files.
- f. Click Export.



- g. The SpitfireExport™ dialog will close and an exporting icon will appear on the main screen. Once it has disappeared, your images have completed the upload process. You may now access them directly from your Spitfire Photo account or continue editing within Aperture.